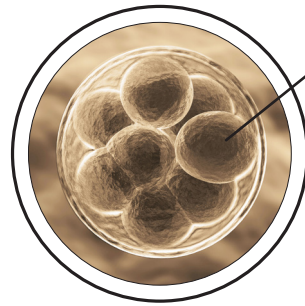
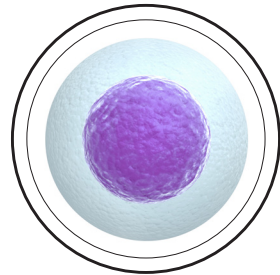


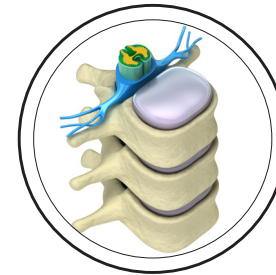
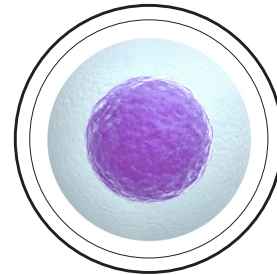
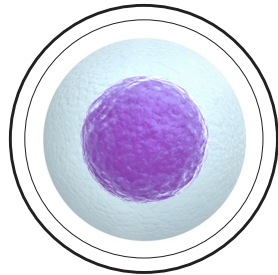
EMBRYO KURZ NACH DER BEFRUCHTUNG



Totipotente Stammzellen



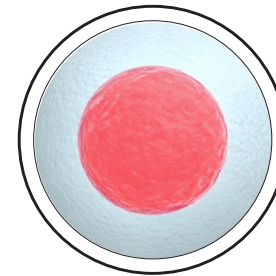
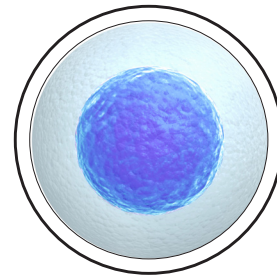
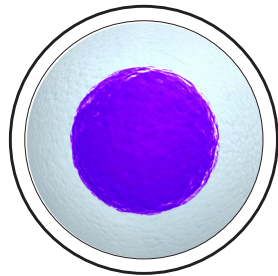
Pluripotente Stammzellen



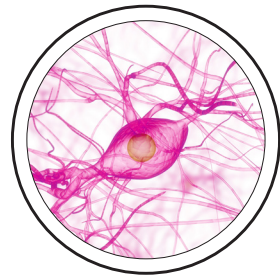
Knochenmark eines gesunden Spenders



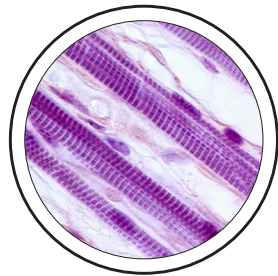
Multipotente Stammzellen



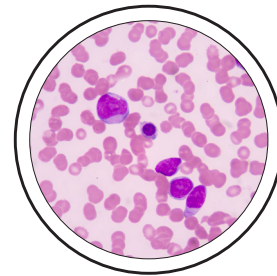
Blutstammzellen



Nervenzellen



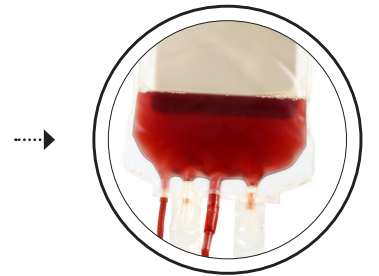
Muskelzellen



Blutzellen



Zellkultur



Behandlung von Blutkrebs mit Stammzellen